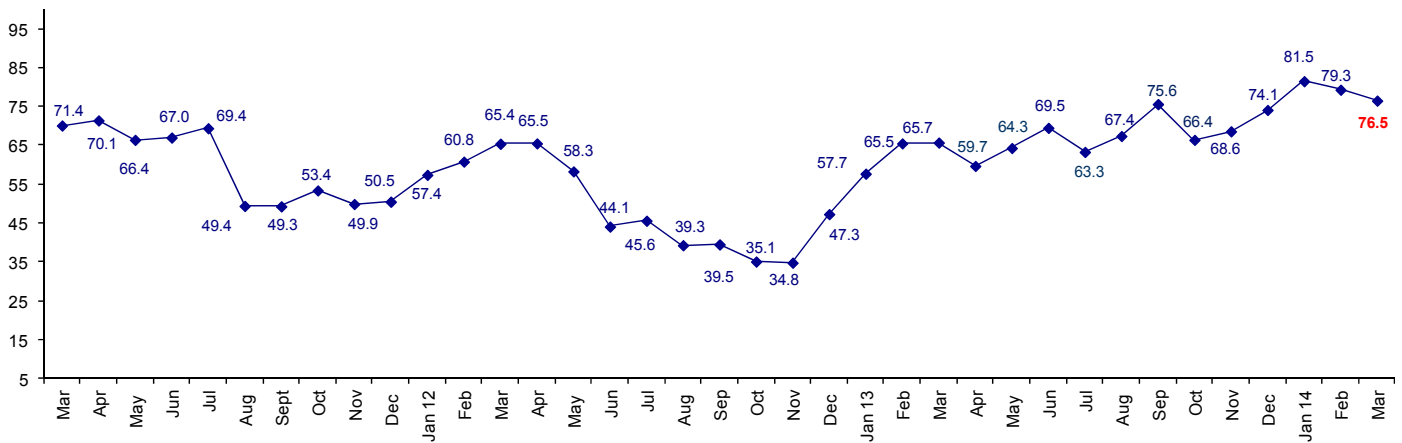


## Industry Personnel Remain Confident about Business Conditions

The March Connector Confidence Index is 76.5 down from February at 79.3.

**World Connector Confidence Index (WCCI)**  
**>50.0 = Positive**



The **World Connector Confidence Index (WCCI)** is the average of all responses for “present situation,” and “future expectations.”

## Present Business Expectations

Industry personnel were asked, "What is your appraisal of current business conditions (positive, negative, neutral)?"

### Present Situation Index

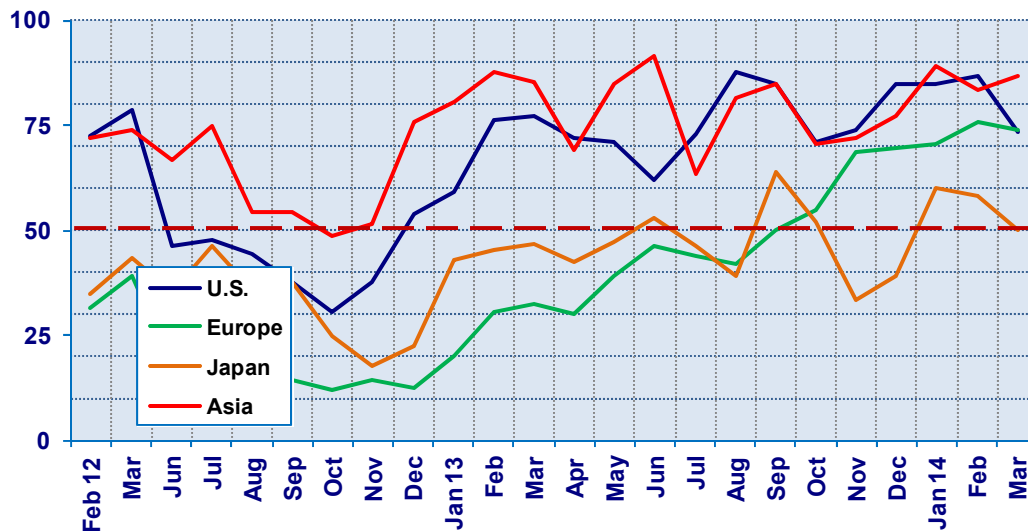
Region	2013					2014			Confidence/ Trend
	Aug	Sep	Oct	Nov	Dec	Jan	Feb	Mar	
North America	87.5	85.4	70.0	73.9	84.8	85.0	86.5	73.3	Positive - Down
Europe	41.9	50.0	54.8	68.4	69.7	70.6	75.8	73.9	Positive - Down
Japan	39.1	64.0	51.9	33.3	39.1	60.0	58.3	50.0	Neutral - Down
Asia	81.3	84.6	70.6	72.0	77.1	88.9	83.3	86.7	Positive - Up
<b>World</b>	<b>62.7</b>	<b>73.3</b>	<b>62.6</b>	<b>63.5</b>	<b>70.2</b>	<b>77.8</b>	<b>77.9</b>	<b>73.7</b>	<b>Positive - Down</b>

Confidence                      Pos    Pos    Pos    Pos    Pos    Pos    Pos    Pos  
Trend                              Up    Down    Up    Up    Up    Up    Up    Down

The industry remains confident in present business conditions in all regions except Japan which is neutral.

### Present Situation Index

>50.0 = Positive



## Future Expectations

Industry personnel were asked, "What is your expectation of future business conditions six months from now (positive, negative, neutral?)

### Future Expectations Index

Region	Aug	Sep	Oct	Nov	Dec	2014			Confidence/ Trend
						Jan	Feb	Mar	
North America	90.3	83.3	72.2	75.0	85.4	90.5	89.2	81.5	Positive - Down
Europe	61.8	67.6	69.4	80.0	78.4	81.4	88.2	84.0	Positive - Down
Japan	48.0	63.0	59.1	52.9	50.0	70.8	60.9	50.0	Neutral - Down
Asia	80.6	90.0	75.0	76.7	85.0	90.5	78.0	90.3	Positive - Up
<b>World</b>	<b>67.4</b>	<b>77.6</b>	<b>70.0</b>	<b>73.0</b>	<b>77.5</b>	<b>84.8</b>	<b>80.7</b>	<b>79.2</b>	<b>Positive - Down</b>
Confidence		Pos	Pos	Pos	Pos	Pos	Pos	Pos	
Trend		Up	Down	Up	Up	Up	Down	Down	

Industry personnel are confident about the future in all regions. However, Japan is neutral.

### Future Expectations Index

(>50.0 = Positive)

