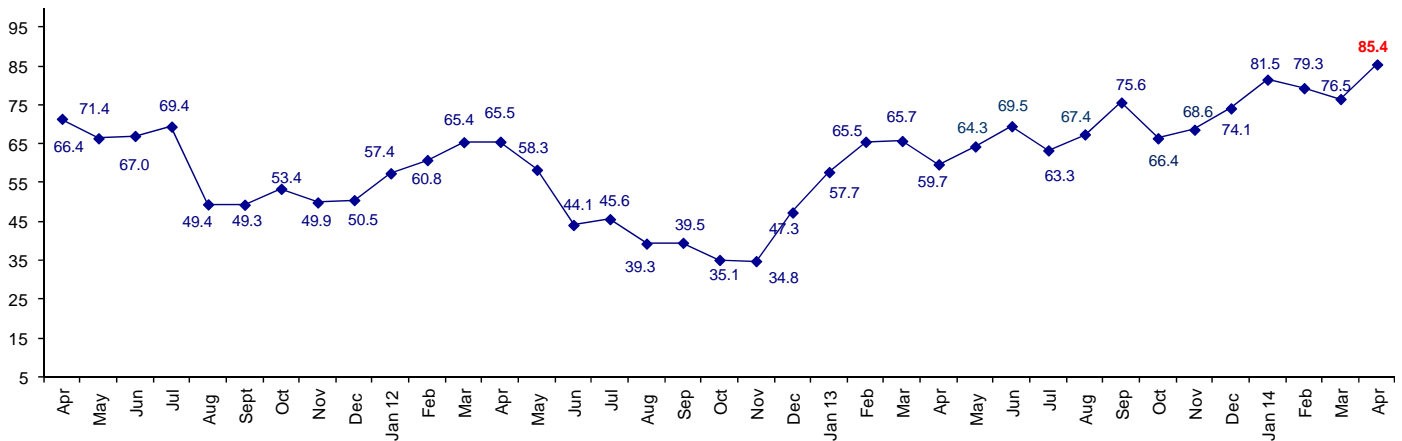


## Confidence Rising 2014 Looks Positive

The April Connector Confidence Index is 85.4 up from March at 76.5.

**World Connector Confidence Index (WCCI)**  
**>50.0 = Positive**



The **World Connector Confidence Index (WCCI)** is the average of all responses for “present situation,” and “future expectations.”

## Present Business Expectations

Industry personnel were asked, "What is your appraisal of current business conditions (positive, negative, neutral)?"

### Present Situation Index

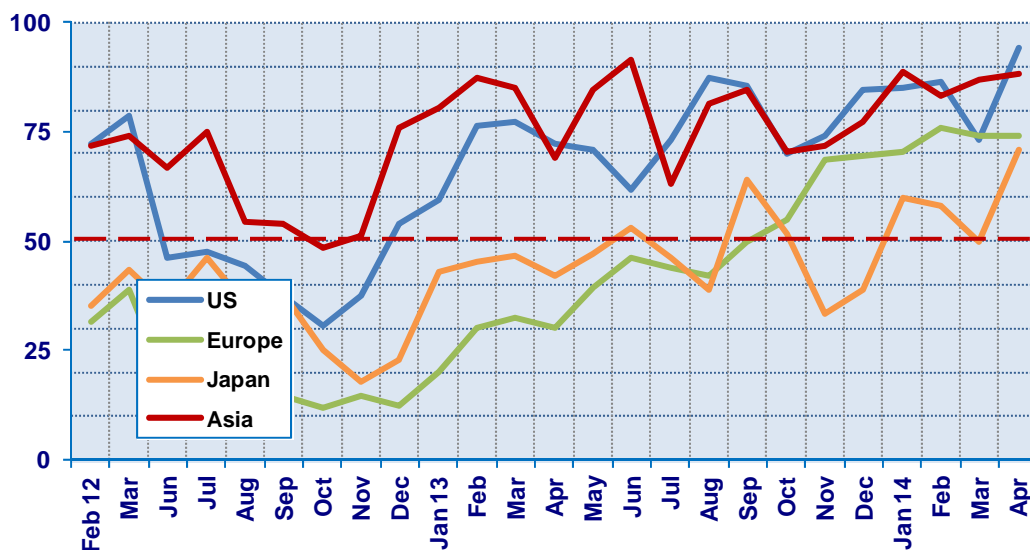
Region	Sep	Oct	Nov	Dec	2014				Confidence/ Trend
					Jan	Feb	Mar	Apr	
North America	85.4	70.0	73.9	84.8	85.0	86.5	73.3	94.3	Positive - Up
Europe	50.0	54.8	68.4	69.7	70.6	75.8	73.9	74.2	Positive - Up
Japan	64.0	51.9	33.3	39.1	60.0	58.3	50.0	70.8	Positive - Up
Asia	84.6	70.6	72.0	77.1	88.9	83.3	86.7	88.2	Positive - Up
<b>World</b>	<b>73.3</b>	<b>62.6</b>	<b>63.5</b>	<b>70.2</b>	<b>77.8</b>	<b>77.9</b>	<b>73.7</b>	<b>83.1</b>	<b>Positive - Up</b>

Confidence                      Pos   Pos   Pos   Pos   Pos   Pos   Pos   Pos  
Trend                                Down   Up   Up   Up   Up   Down   Up

All regions of the industry are positive about present business conditions. The U.S and Japan are up dramatically.

### Present Situation Index

>50.0 = Positive



## Future Expectations

Industry personnel were asked, "What is your expectation of future business conditions six months from now (positive, negative, neutral?)

### Future Expectations Index

Region	Sep	Oct	Nov	Dec	2014				Confidence/ Trend
					Jan	Feb	Mar	Apr	
North America	83.3	72.2	75.0	85.4	90.5	89.2	81.5	94.1	Positive - Up
Europe	67.6	69.4	80.0	78.4	81.4	88.2	84.0	83.9	Positive - Down
Japan	63.0	59.1	52.9	50.0	70.8	60.9	50.0	76.2	Positive - Up
Asia	90.0	75.0	76.7	85.0	90.5	78.0	90.3	93.3	Positive - Up
<b>World</b>	<b>77.6</b>	<b>70.0</b>	<b>73.0</b>	<b>77.5</b>	<b>84.8</b>	<b>80.7</b>	<b>79.2</b>	<b>87.9</b>	<b>Positive - Up</b>
Confidence		Pos	Pos	Pos	Pos	Pos	Pos	Pos	
Trend		Down	Up	Up	Up	Down	Down	Up	

Industry personnel are confident about the future in all regions, and all are up in April, except Europe.

### Future Expectations Index

(>50.0 = Positive)

