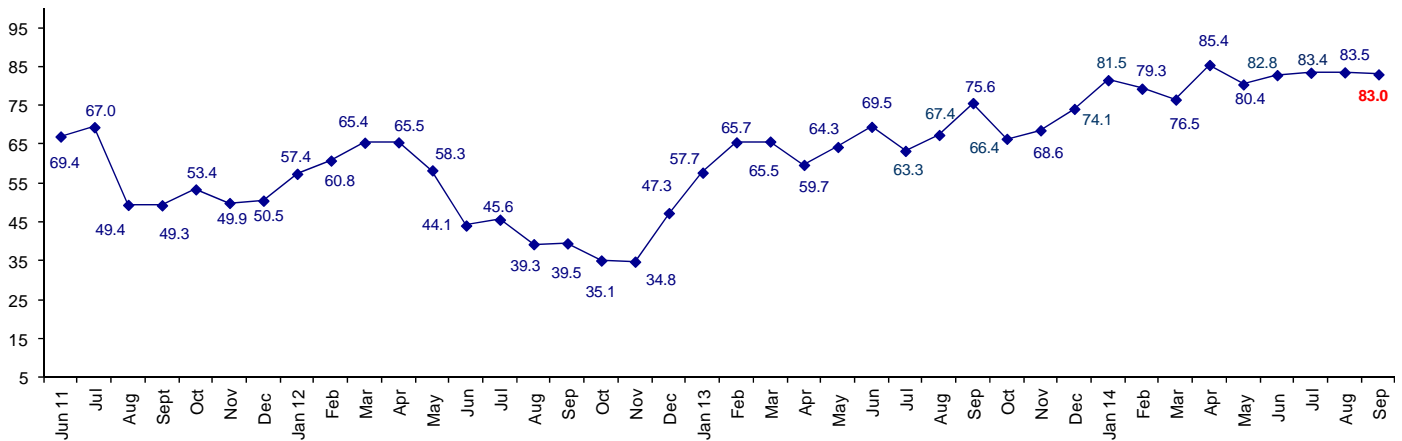


Industry Personnel Still Confident In Business Outlook

The September Connector Confidence Index is 83.0 about the same as August at 83.5.

World Connector Confidence Index (WCCI) >50.0 = Positive



The **World Connector Confidence Index (WCCI)** is the average of all responses for “present situation,” and “future expectations.”

Present Business Expectations

Industry personnel were asked, "What is your appraisal of current business conditions (positive, negative, neutral)?"

Present Situation Index

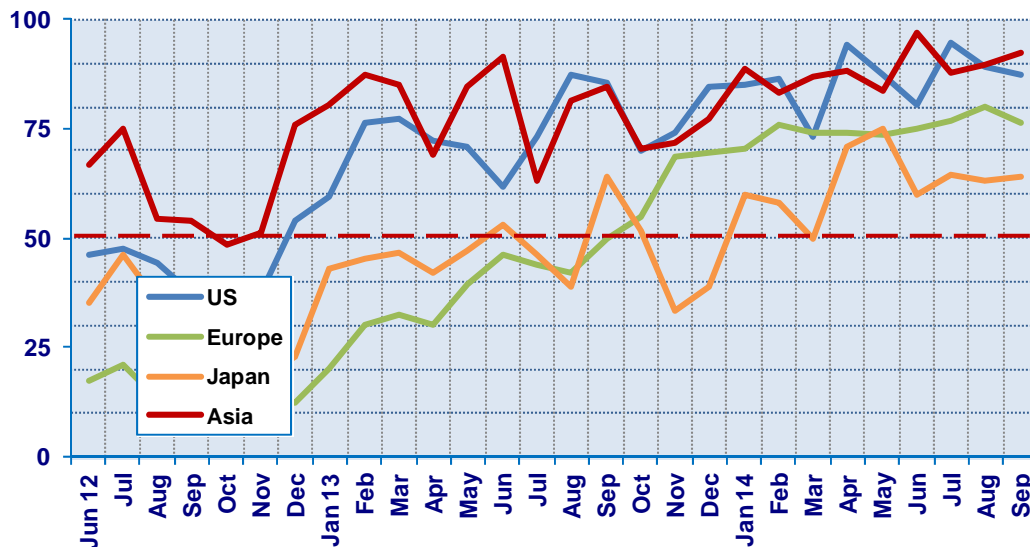
Region	2014								Confidence/ Trend
	Feb	Mar	Apr	May	Jun	Jul	Aug	Sep	
North America	86.5	73.3	94.3	87.5	80.6	94.7	89.3	87.5	Positive - Down
Europe	75.8	73.9	74.2	73.5	75.0	76.9	80.0	76.2	Positive - Down
Japan	58.3	50.0	70.8	75.0	60.0	64.5	63.2	64.0	Positive - Up
Asia	83.3	86.7	88.2	83.9	97.1	87.8	89.7	92.3	Positive - Up
World	77.9	73.7	83.1	80.5	80.3	81.9	82.1	81.5	Positive - Up

Confidence Pos Pos Pos Pos Pos Pos Pos Pos
Trend Down Up Down Down Up Up Up

All regions are positive about present business conditions. North America and Europe have dropped in confidence.

Present Situation Index

>50.0 = Positive



Future Expectations

Industry personnel were asked, "What is your expectation of future business conditions six months from now (positive, negative, neutral?)

Future Expectations Index

Region	2014								Confidence/ Trend
	Feb	Mar	Apr	May	Jun	Jul	Aug	Sep	
North America	89.2	81.5	94.1	86.1	88.6	92.7	90.0	88.6	Positive - Down
Europe	88.2	84.0	83.9	78.8	80.6	81.6	84.6	81.6	Positive - Down
Japan	60.9	50.0	76.2	64.7	65.0	74.1	68.2	69.0	Positive - Up
Asia	78.0	90.3	93.3	83.9	97.1	87.8	92.9	94.6	Positive - Up
World	80.7	79.2	87.9	80.3	85.1	85.0	84.9	84.5	Positive - Down
Confidence		Pos	Pos	Pos	Pos	Pos	Pos	Pos	
Trend		Down	Up	Down	Up	Down	Down	Down	

Confidence is positive in all geographic regions. North America and Europe also dropped in confidence about future business conditions.

Future Expectations Index

(>50.0 = Positive)

