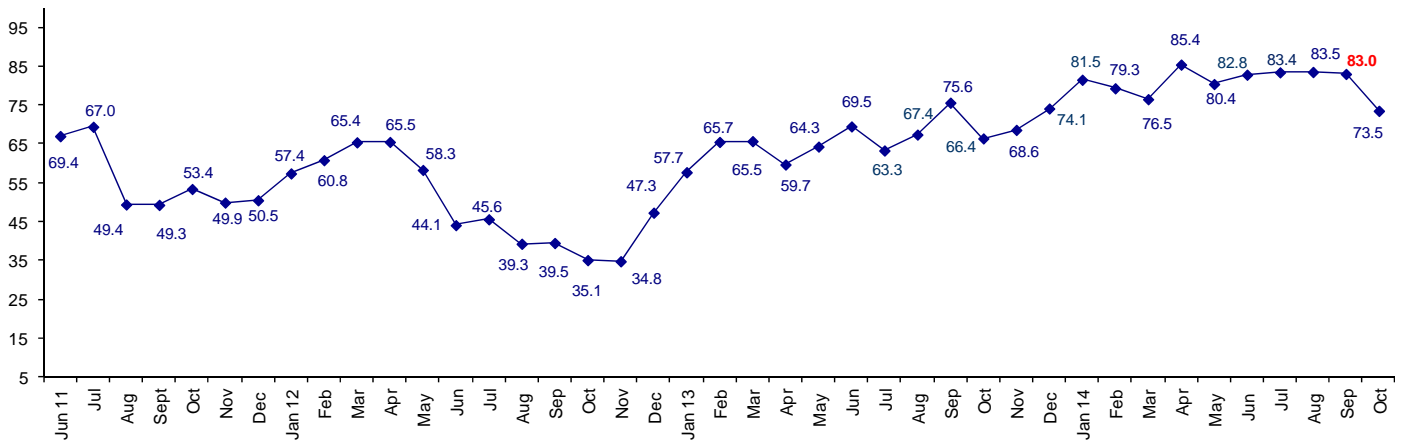


Confidence Drops Ten Points in October

The October Connector Confidence Index is 73.5, which is the lowest index in 2014. September index was 83.0.

World Connector Confidence Index (WCCI) >50.0 = Positive



The **World Connector Confidence Index (WCCI)** is the average of all responses for “present situation,” and “future expectations.”

Present Business Expectations

Industry personnel were asked, "What is your appraisal of current business conditions (positive, negative, neutral)?"

Present Situation Index

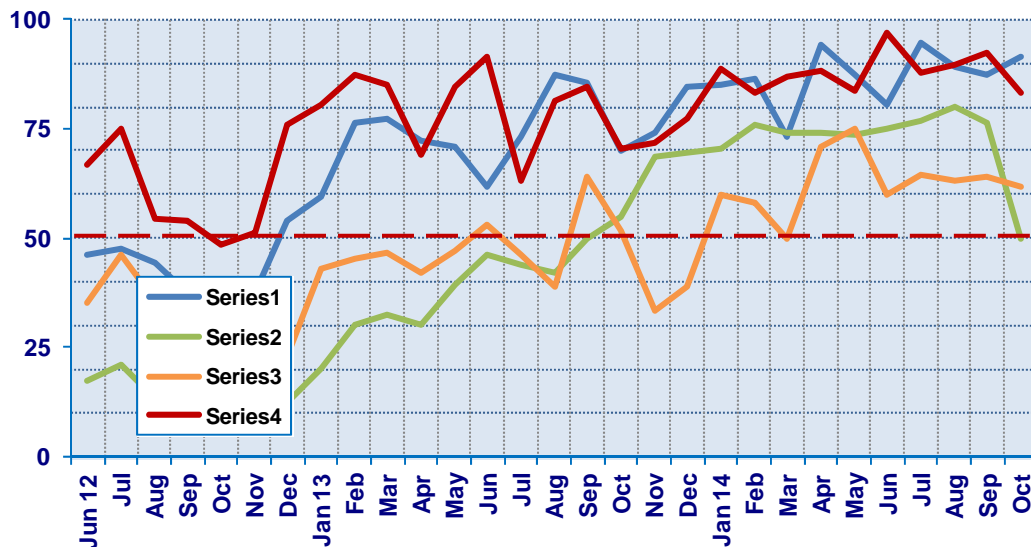
Region	2014								Confidence/ Trend
	Mar	Apr	May	Jun	Jul	Aug	Sep	Oct	
North America	73.3	94.3	87.5	80.6	94.7	89.3	87.5	91.7	Positive - Up
Europe	73.9	74.2	73.5	75.0	76.9	80.0	76.2	50.0	Positive - Down
Japan	50.0	70.8	75.0	60.0	64.5	63.2	64.0	61.9	Positive - Down
Asia	86.7	88.2	83.9	97.1	87.8	89.7	92.3	83.3	Positive - Down
World	73.7	83.1	80.5	80.3	81.9	82.1	81.5	73.6	Positive - Down

Confidence Pos Pos Pos Pos Pos Pos Pos Pos
Trend Up Down Down Up Up Up Up Down

All regions are positive about present business conditions. The only region that has gone up in confidence is North America.

Present Situation Index

>50.0 = Positive



Future Expectations

Industry personnel were asked, "What is your expectation of future business conditions six months from now (positive, negative, neutral?)

Future Expectations Index

Region	2014								Confidence/ Trend
	Mar	Apr	May	Jun	Jul	Aug	Sep	Oct	
North America	81.5	94.1	86.1	88.6	92.7	90.0	88.6	86.5	Positive - Down
Europe	84.0	83.9	78.8	80.6	81.6	84.6	81.6	56.4	Positive - Down
Japan	50.0	76.2	64.7	65.0	74.1	68.2	69.0	62.5	Positive - Down
Asia	90.3	93.3	83.9	97.1	87.8	92.9	94.6	85.7	Positive - Down
World	79.2	87.9	80.3	85.1	85.0	84.9	84.5	73.3	Positive - Down
Confidence		Pos	Pos	Pos	Pos	Pos	Pos	Pos	
Trend		Up	Down	Up	Down	Down	Down	Down	

Confidence is positive in all geographic regions. All regions have dropped in confidence .

Future Expectations Index

(>50.0 = Positive)

