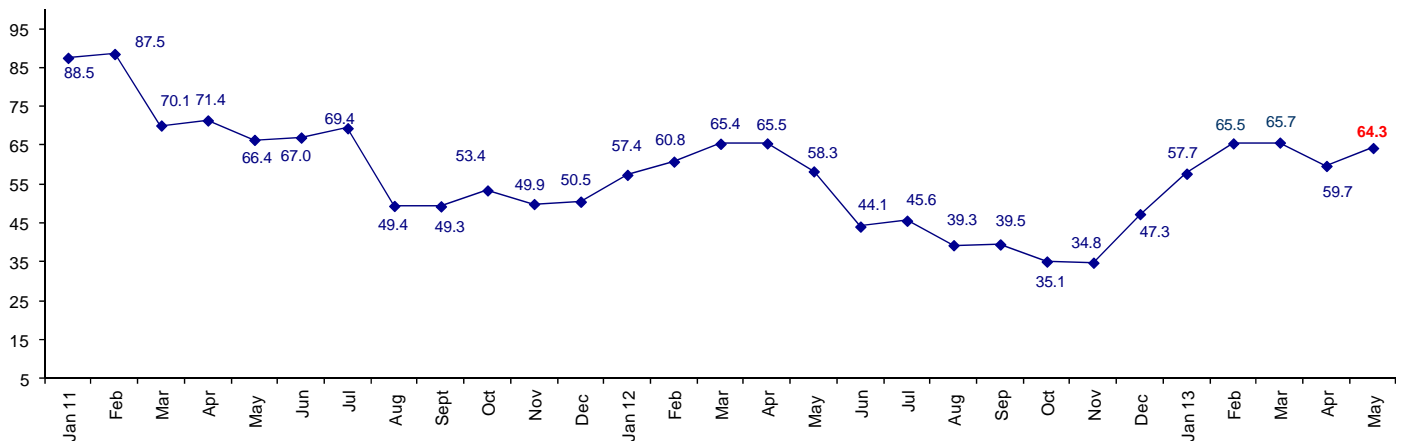


Connector Confidence in Positive Territory Fifth Consecutive Month

The May Connector Confidence Index is 64.3, back up from the slight downturn in April.

World Connector Confidence Index (WCCI) >50.0 = Positive



The **World Connector Confidence Index (WCCI)** is the average of all responses for “present situation,” and “future expectations.”

Present Business Expectations

Industry personnel were asked, "What is your appraisal of current business conditions (positive, negative, neutral)?"

Present Situation Index

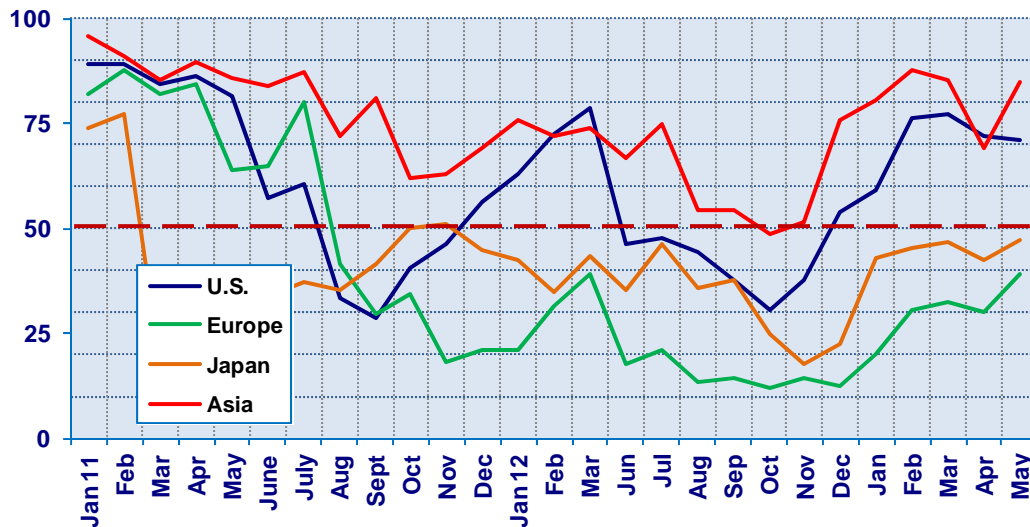
Region	2012			2013					Confidence/ Trend
	Oct	Nov	Dec	Jan	Feb	Mar	Apr	May	
North America	30.6	37.5	53.8	59.3	76.3	77.4	72.1	70.8	Positive - Down
Europe	12.0	14.6	12.5	20.0	30.4	32.4	30.2	39.3	Negative - Up
Japan	25.0	17.9	22.7	42.9	45.5	46.7	42.3	47.1	Negative - Up
Asia	48.5	51.4	75.9	80.6	87.5	85.2	68.9	84.6	Positive - Up
World	27.2	29.8	39.3	50.4	60.3	60.7	54.8	61.1	Positive - Up

Confidence Neg Neg Pos Pos Pos Pos Pos
 Trend Up Up Up Up Up Down Up

The U.S. and Asia are still the two regions that remain positive about present business conditions. Europe and Japan are in negative territory, but up from April. Asia is back up significantly at 84.6 in May from April at 68.9.

Present Situation Index

>50.0 = Positive



Future Expectations

Industry personnel were asked, "What is your expectation of future business conditions six months from now (positive, negative, neutral?)"

Future Expectations Index

Region	Oct	Nov	Dec	2013					Confidence/ Trend
				Jan	Feb	Mar	Apr	May	
North America	51.3	48.9	65.4	75.0	85.0	83.9	77.3	71.4	Positive - Down
Europe	28.0	17.4	28.2	35.5	43.5	37.0	45.0	46.4	Negative - Up
Japan	33.3	34.5	44.0	58.8	64.0	71.4	57.1	66.7	Positive - Up
Asia	59.0	57.5	85.3	90.0	92.3	89.3	73.9	85.2	Positive - Up
World	42.4	39.5	54.8	65.1	70.7	71.0	64.6	67.3	Positive - Up
Confidence		Neg	Pos	Pos	Pos	Pos	Pos	Pos	
Trend		Down	Up	Up	Up	Up	Down	Up	

North America, Japan and Asia are in the positive range. Europe is up, but still negative.

Future Expectations Index

(>50.0 = Positive)

