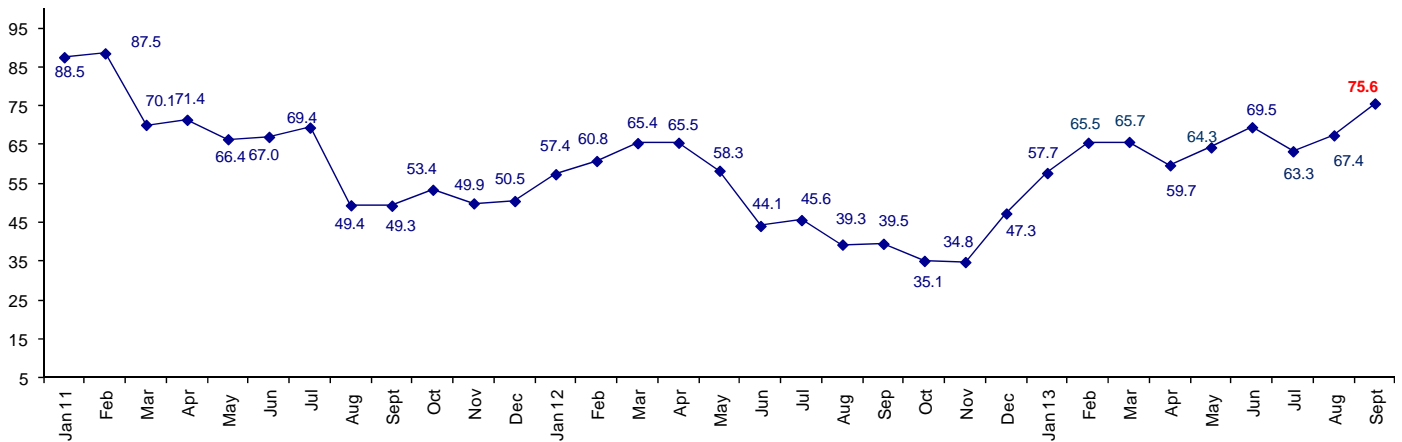


## Confidence Moving Up in September

The September Connector Confidence Index is 75.6 up from August at 67.4 and up from July at 63.3. The industry became more confident in January 2013, and has stayed in positive territory all year.

**World Connector Confidence Index (WCCI)**  
**>50.0 = Positive**



The **World Connector Confidence Index (WCCI)** is the average of all responses for “present situation,” and “future expectations.”

## Present Business Expectations

Industry personnel were asked, "What is your appraisal of current business conditions (positive, negative, neutral)?"

### Present Situation Index

Region	2012		2013									Confidence/ Trend
	Nov	Dec	Jan	Feb	Mar	Apr	May	Jun	Jul	Aug	Sep	
North America	37.5	53.8	59.3	76.3	77.4	72.1	70.8	61.9	73.0	87.5	85.4	Positive - Down
Europe	14.6	12.5	20.0	30.4	32.4	30.2	39.3	46.3	43.9	41.9	50.0	Neutral - Up
Japan	17.9	22.7	42.9	45.5	46.7	42.3	47.1	52.9	46.2	39.1	64.0	Positive - Up
Asia	51.4	75.9	80.6	87.5	85.2	68.9	84.6	91.3	63.2	81.3	84.6	Positive - Up
<b>World</b>	<b>29.8</b>	<b>39.3</b>	<b>50.4</b>	<b>60.3</b>	<b>60.7</b>	<b>54.8</b>	<b>61.1</b>	<b>62.9</b>	<b>57.0</b>	<b>62.7</b>	<b>73.3</b>	<b>Positive - Up</b>

Confidence  
Trend

Neg  
Up

Pos  
Up

Pos  
Up

Pos  
Up

Pos  
Down

Pos  
Up

Pos  
Up

Pos  
Down

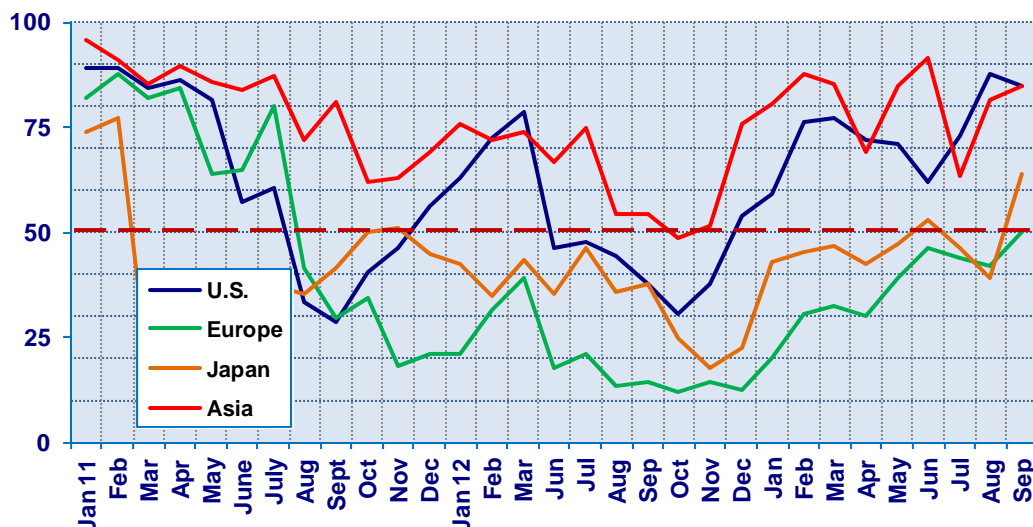
Pos  
Up

Pos  
Up

Europe is neutral for the first time in many months. North America, Japan and Asia are all positive. Japan is now positive about business conditions which the region has not been for a few years, since the earthquake in 2011.

### Present Situation Index

>50.0 = Positive



## Future Expectations

Industry personnel were asked, "What is your expectation of future business conditions six months from now (positive, negative, neutral?)

### Future Expectations Index

Region	2012		2013									Confidence/ Trend
	Nov	Dec	Jan	Feb	Mar	Apr	May	Jun	Jul	Aug	Sep	
North America	48.9	65.4	75.0	85.0	83.9	77.3	71.4	82.1	85.0	90.3	83.3	Positive - Down
Europe	17.4	28.2	35.5	43.5	37.0	45.0	46.4	64.3	58.5	61.8	67.6	Positive - Up
Japan	34.5	44.0	58.8	64.0	71.4	57.1	66.7	68.4	58.3	48.0	63.0	Positive - Up
Asia	57.5	85.3	90.0	92.3	89.3	73.9	85.2	84.6	72.2	80.6	90.0	Positive - Up
<b>World</b>	<b>39.5</b>	<b>54.8</b>	<b>65.1</b>	<b>70.7</b>	<b>71.0</b>	<b>64.6</b>	<b>67.3</b>	<b>75.2</b>	<b>69.5</b>	<b>67.4</b>	<b>77.6</b>	<b>Positive - Up</b>
Confidence		Pos	Pos	Pos	Pos	Pos	Pos	Pos	Pos	Pos	Pos	
Trend		Up	Up	Up	Up	Down	Up	Up	Down	Down	Up	

All regions are positive about future business conditions, and all are up in confidence, except North America.

### Future Expectations Index

(>50.0 = Positive)

