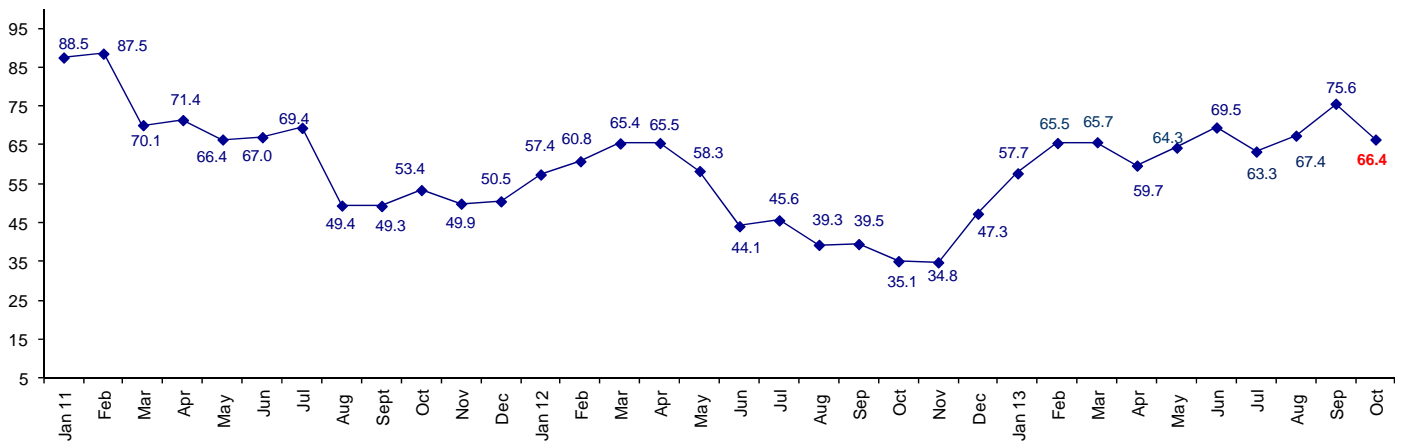


## Confidence is Still Positive But Down Sharply from September

The October Connector Confidence Index is 66.4 down from September at 75.6.

**World Connector Confidence Index (WCCI)**  
**>50.0 = Positive**



The **World Connector Confidence Index (WCCI)** is the average of all responses for “present situation,” and “future expectations.”

## Present Business Expectations

Industry personnel were asked, "What is your appraisal of current business conditions (positive, negative, neutral)?"

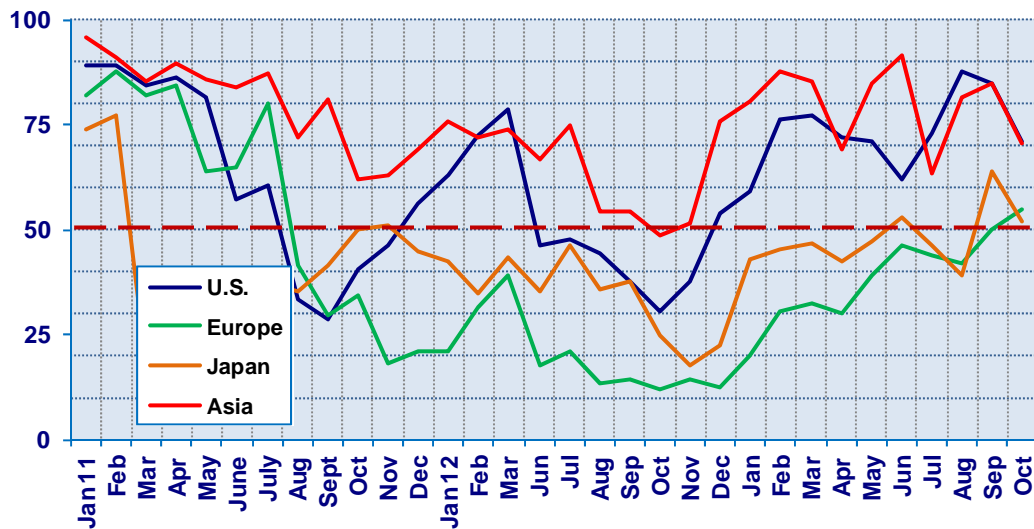
### Present Situation Index

Region	2012	2013										Confidence/ Trend
	Dec	Jan	Feb	Mar	Apr	May	Jun	Jul	Aug	Sep	Oct	
North America	53.8	59.3	76.3	77.4	72.1	70.8	61.9	73.0	87.5	85.4	70.0	Positive - Down
Europe	12.5	20.0	30.4	32.4	30.2	39.3	46.3	43.9	41.9	50.0	54.8	Positive - Up
Japan	22.7	42.9	45.5	46.7	42.3	47.1	52.9	46.2	39.1	64.0	51.9	Positive - Down
Asia	75.9	80.6	87.5	85.2	68.9	84.6	91.3	63.2	81.3	84.6	70.6	Positive - Down
<b>World</b>	<b>39.3</b>	<b>50.4</b>	<b>60.3</b>	<b>60.7</b>	<b>54.8</b>	<b>61.1</b>	<b>62.9</b>	<b>57.0</b>	<b>62.7</b>	<b>73.3</b>	<b>62.6</b>	<b>Positive -Down</b>
Confidence		Pos	Pos	Pos	Pos	Pos	Pos	Pos	Pos	Pos	Pos	
Trend		Up	Up	Up	Down	Up	Up	Down	Up	Up	Down	

All regions are positive, but Europe and Japan just barely. North America and Asia both dropped 15 points in their level of confidence.

### Present Situation Index

>50.0 = Positive



## Future Expectations

Industry personnel were asked, "What is your expectation of future business conditions six months from now (positive, negative, neutral?)

### Future Expectations Index

Region	2012	2013										Confidence/ Trend
	Dec	Jan	Feb	Mar	Apr	May	Jun	Jul	Aug	Sep	Oct	
North America	65.4	75.0	85.0	83.9	77.3	71.4	82.1	85.0	90.3	83.3	72.2	Positive - Down
Europe	28.2	35.5	43.5	37.0	45.0	46.4	64.3	58.5	61.8	67.6	69.4	Positive - Up
Japan	44.0	58.8	64.0	71.4	57.1	66.7	68.4	58.3	48.0	63.0	59.1	Positive - Down
Asia	85.3	90.0	92.3	89.3	73.9	85.2	84.6	72.2	80.6	90.0	75.0	Positive - Down
<b>World</b>	<b>54.8</b>	<b>65.1</b>	<b>70.7</b>	<b>71.0</b>	<b>64.6</b>	<b>67.3</b>	<b>75.2</b>	<b>69.5</b>	<b>67.4</b>	<b>77.6</b>	<b>70.0</b>	<b>Positive - Down</b>
Confidence		Pos	Pos	Pos	Pos	Pos	Pos	Pos	Pos	Pos	Pos	
Trend		Up	Up	Up	Down	Up	Up	Down	Down	Up	Down	

All regions are positive about future business conditions. Asia and North America dropped significantly.

### Future Expectations Index

(>50.0 = Positive)

