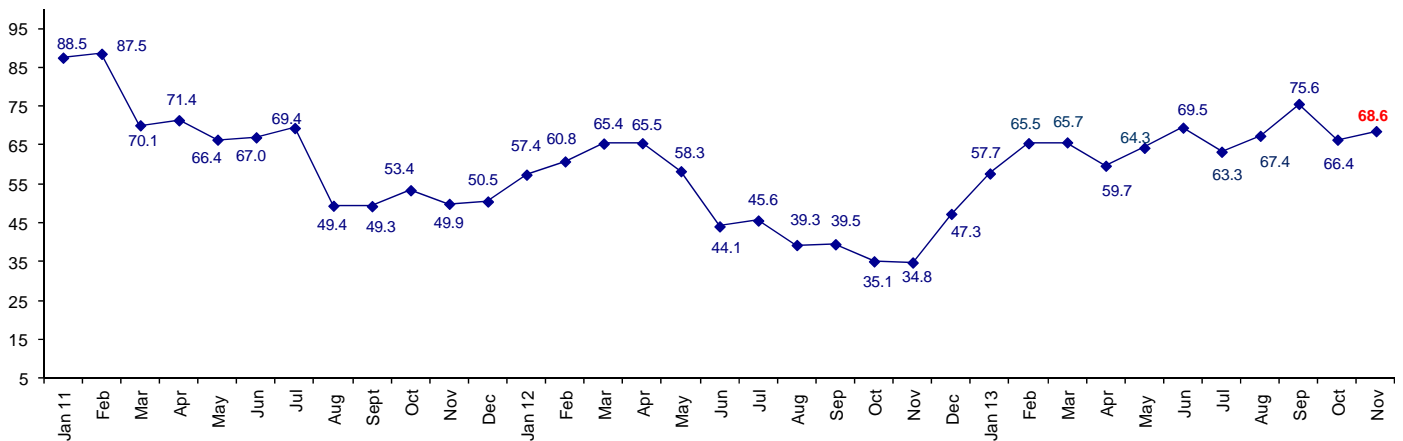


Industry Still Confident In Business Conditions

The November Connector Confidence Index is 68.6 up from October at 66.4, but still lower from September at 75.6.

World Connector Confidence Index (WCCI)
>50.0 = Positive



The **World Connector Confidence Index (WCCI)** is the average of all responses for “present situation,” and “future expectations.”

Present Business Expectations

Industry personnel were asked, "What is your appraisal of current business conditions (positive, negative, neutral)?"

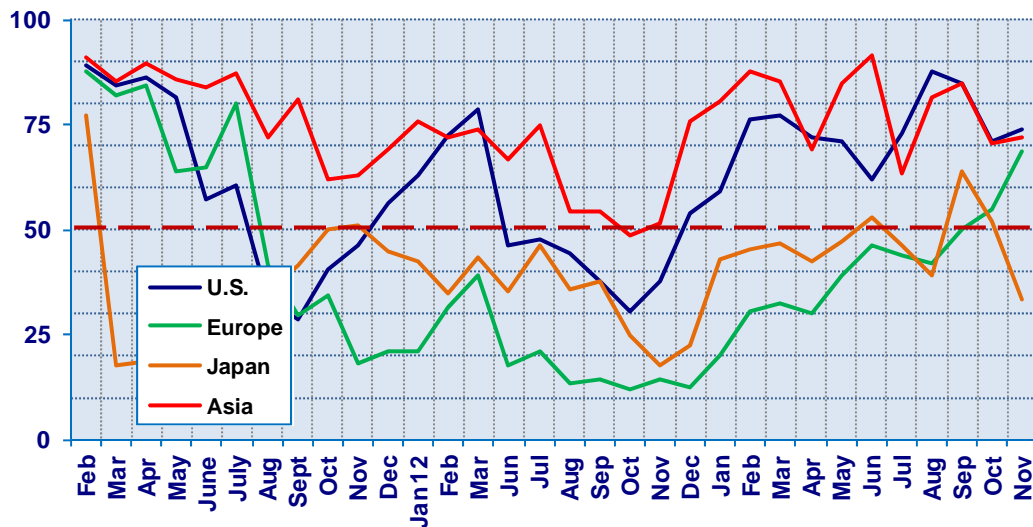
Present Situation Index

Region	2012	2013											Confidence/ Trend
	Dec	Jan	Feb	Mar	Apr	May	Jun	Jul	Aug	Sep	Oct	Nov	
North America	53.8	59.3	76.3	77.4	72.1	70.8	61.9	73.0	87.5	85.4	70.0	73.9	Positive - Up
Europe	12.5	20.0	30.4	32.4	30.2	39.3	46.3	43.9	41.9	50.0	54.8	68.4	Positive - Up
Japan	22.7	42.9	45.5	46.7	42.3	47.1	52.9	46.2	39.1	64.0	51.9	33.3	Negative - Down
Asia	75.9	80.6	87.5	85.2	68.9	84.6	91.3	63.2	81.3	84.6	70.6	72.0	Positive - Up
World	39.3	50.4	60.3	60.7	54.8	61.1	62.9	57.0	62.7	73.3	62.6	63.5	Positive - Up
Confidence		Pos	Pos	Pos	Pos	Pos	Pos	Pos	Pos	Pos	Pos	Pos	
Trend		Up	Up	Up	Down	Up	Up	Down	Up	Up	Down	Up	

All regions are positive, and up, except Japan. Japan's present expectation declined significantly hitting a new low in 2013.

Present Situation Index

>50.0 = Positive



Future Expectations

Industry personnel were asked, "What is your expectation of future business conditions six months from now (positive, negative, neutral?)

Future Expectations Index

Region	2012	2013											Confidence/ Trend
	Dec	Jan	Feb	Mar	Apr	May	Jun	Jul	Aug	Sep	Oct	Nov	
North America	65.4	75.0	85.0	83.9	77.3	71.4	82.1	85.0	90.3	83.3	72.2	75.0	Positive - Up
Europe	28.2	35.5	43.5	37.0	45.0	46.4	64.3	58.5	61.8	67.6	69.4	80	Positive -Up
Japan	44.0	58.8	64.0	71.4	57.1	66.7	68.4	58.3	48.0	63.0	59.1	52.9	Positive - Down
Asia	85.3	90.0	92.3	89.3	73.9	85.2	84.6	72.2	80.6	90.0	75.0	76.7	Positive - Up
World	54.8	65.1	70.7	71.0	64.6	67.3	75.2	69.5	67.4	77.6	70.0	73.0	Positive - Up
Confidence		Pos	Pos	Pos	Pos	Pos	Pos	Pos	Pos	Pos	Pos	Pos	
Trend		Up	Up	Up	Down	Up	Up	Down	Down	Up	Down	Up	

All regions are positive about future business conditions. Japan is the only region that is down, but still remains positive.

Future Expectations Index

(>50.0 = Positive)

