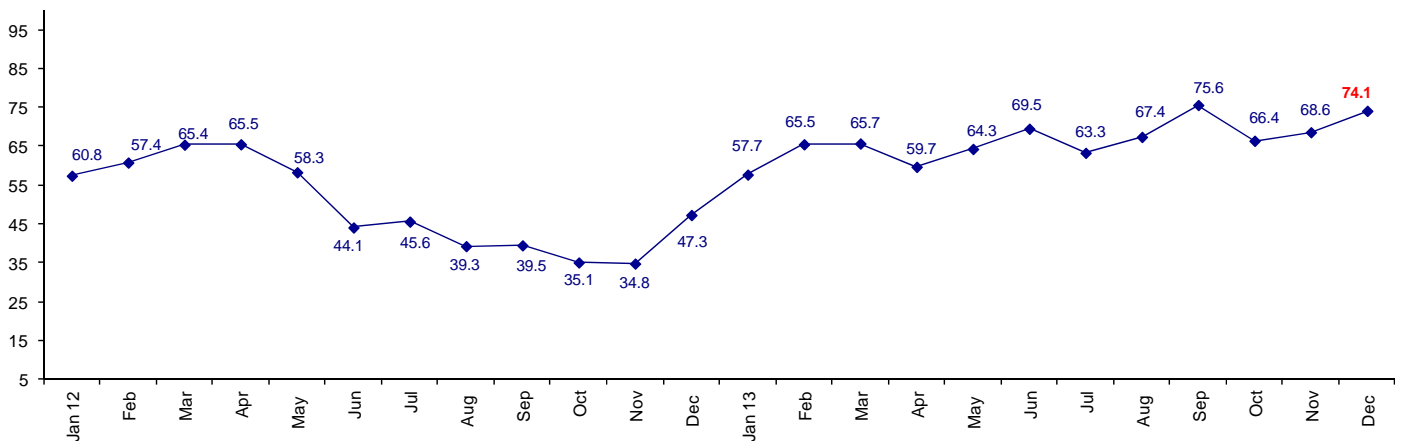


North America Becomes Very Confident in Business Conditions

The December Connector Confidence Index is 74.1, up from November at 68.6.

World Connector Confidence Index (WCCI) >50.0 = Positive



The **World Connector Confidence Index (WCCI)** is the average of all responses for “present situation,” and “future expectations.”

Present Business Expectations

Industry personnel were asked, "What is your appraisal of current business conditions (positive, negative, neutral)?"

Present Situation Index

Region	May	Jun	Jul	Aug	Sep	Oct	Nov	Dec	Confidence/ Trend
North America	70.8	61.9	73.0	87.5	85.4	70.0	73.9	84.8	Positive - Up
Europe	39.3	46.3	43.9	41.9	50.0	54.8	68.4	69.7	Positive - Up
Japan	47.1	52.9	46.2	39.1	64.0	51.9	33.3	39.1	Negative - Up
Asia	84.6	91.3	63.2	81.3	84.6	70.6	72.0	77.1	Positive - Up
World	61.1	62.9	57.0	62.7	73.3	62.6	63.5	70.2	Positive - Up

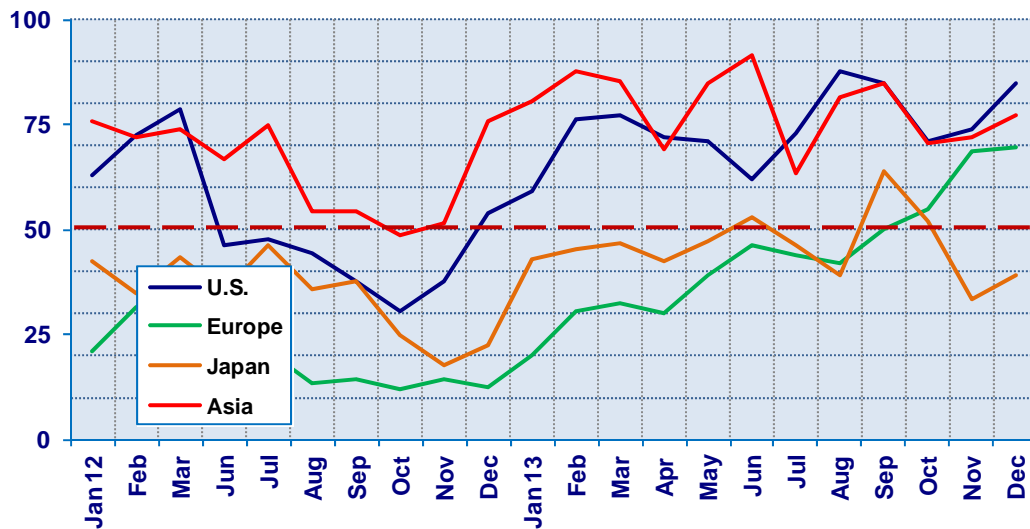
Confidence
Trend

Pos Up Pos Down Pos Up Pos Up Pos Down Pos Up Pos Up

All regions are up. Japan is still negative. North America's confidence is surging upward.

Present Situation Index

>50.0 = Positive



Future Expectations

Industry personnel were asked, "What is your expectation of future business conditions six months from now (positive, negative, neutral?)

Future Expectations Index

Region	May	Jun	Jul	Aug	Sep	Oct	Nov	Dec	Confidence/ Trend
North America	71.4	82.1	85.0	90.3	83.3	72.2	75.0	85.4	Positive - Up
Europe	46.4	64.3	58.5	61.8	67.6	69.4	80.0	78.4	Positive -Down
Japan	66.7	68.4	58.3	48.0	63.0	59.1	52.9	50.0	Neutral - Down
Asia	85.2	84.6	72.2	80.6	90.0	75.0	76.7	85.0	Positive - Up
World	67.3	75.2	69.5	67.4	77.6	70.0	73.0	77.5	Positive - Up
Confidence		Pos	Pos	Pos	Pos	Pos	Pos	Pos	
Trend		Up	Down	Down	Up	Down	Up	Up	

All regions are positive, except Japan, about future business conditions. Japan is now neutral. North America and Asia are up significantly from November.

Future Expectations Index

(>50.0 = Positive)

