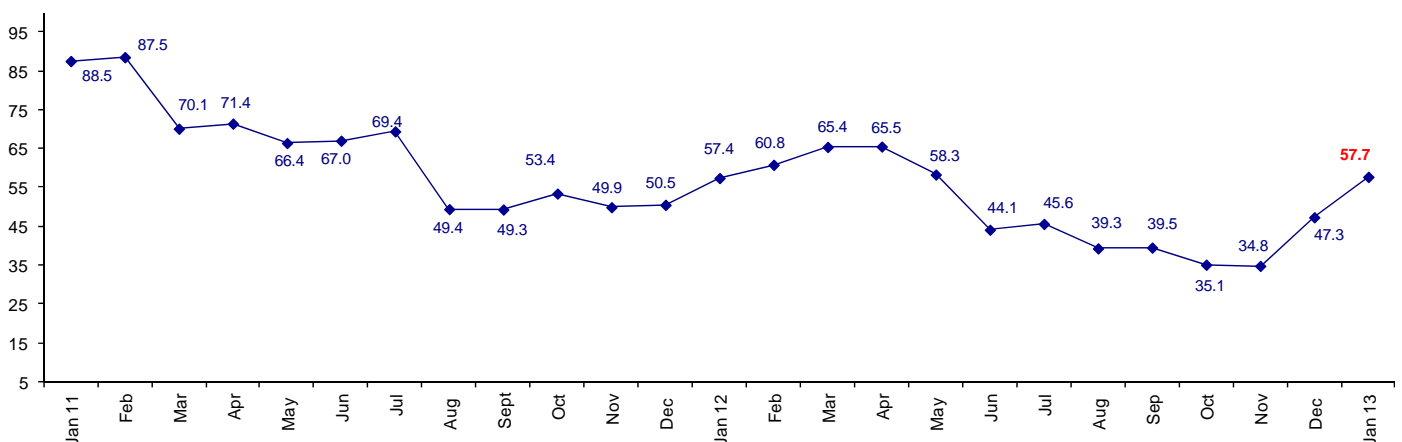


Connector Confidence Up For the First Time in 7 Months

The January Connector Confidence Index is 57.7 up from December at 47.3 and November at 34.8. Confidence is positive in the U.S. and Asia. Japan and Europe are still low in confidence.

World Connector Confidence Index (WCCI) >50.0 = Positive

The Confidence Index is positive for the first time in seven consecutive months.



The **World Connector Confidence Index (WCCI)** is the average of all responses for “present situation,” and “future expectations.”

Present Business Expectations

Industry personnel were asked, "What is your appraisal of current business conditions (positive, negative, neutral)?"

Present Situation Index

Region	2012							2013	Confidence/ Trend
	Jun	Jul	Aug	Sept	Oct	Nov	Dec	Jan	
North America	46.2	47.5	44.4	37.5	30.6	37.5	53.8	59.3	Positive - Up
Europe	17.6	21.1	13.2	14.5	12.0	14.6	12.5	20.0	Negative - Up
Japan	35.3	46.2	35.7	37.9	25.0	17.9	22.7	42.9	Negative - Up
Asia	66.7	75.0	54.3	54.2	48.5	51.4	75.9	80.6	Positive - Up
World	41.1	45.6	35.6	34.9	27.2	29.8	39.3	50.4	Positive - Up

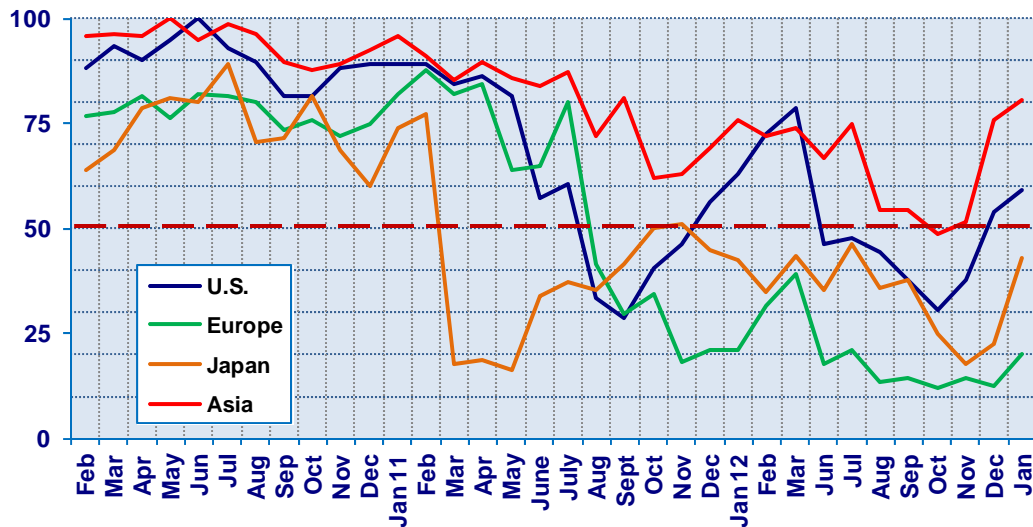
Confidence
Trend

Neg Up Neg Down Neg Down Neg Down Neg Up Neg Up Pos Up

All regions went up in confidence, although Europe and Japan still are negative about the present. The U.S. is positive about present business conditions for the second time in six months.

Present Situation Index

>50.0 = Positive



Future Expectations

Industry personnel were asked, "What is your expectation of future business conditions six months from now (positive, negative, neutral?)

Future Expectations Index

Region	2012							2013	Confidence/ Trend
	Jun	Jul	Aug	Sept	Oct	Nov	Dec	Jan	
North America	48.5	36.6	51.1	52.2	51.3	48.9	65.4	75.0	Positive - Up
Europe	25.0	30.8	20.8	23.5	28.0	17.4	28.2	35.5	Negative - Up
Japan	36.3	53.8	41.4	43.9	33.3	34.5	44.0	58.8	Positive - Up
Asia	72.7	68.3	58.3	56.6	59.0	57.5	85.3	90.0	Positive - Up
World	46.7	45.6	42.9	44.0	42.4	39.5	54.8	65.1	Positive - Up
Confidence		Neg	Neg	Neg	Neg	Neg	Pos	Pos	
Trend		Down	Down	Up	Down	Down	Up	Up	

All regions are up in future expectations. Asia, North America and Japan are positive about the future. Europe still remains negative about the future.

Future Expectations Index

(>50.0 = Positive)

